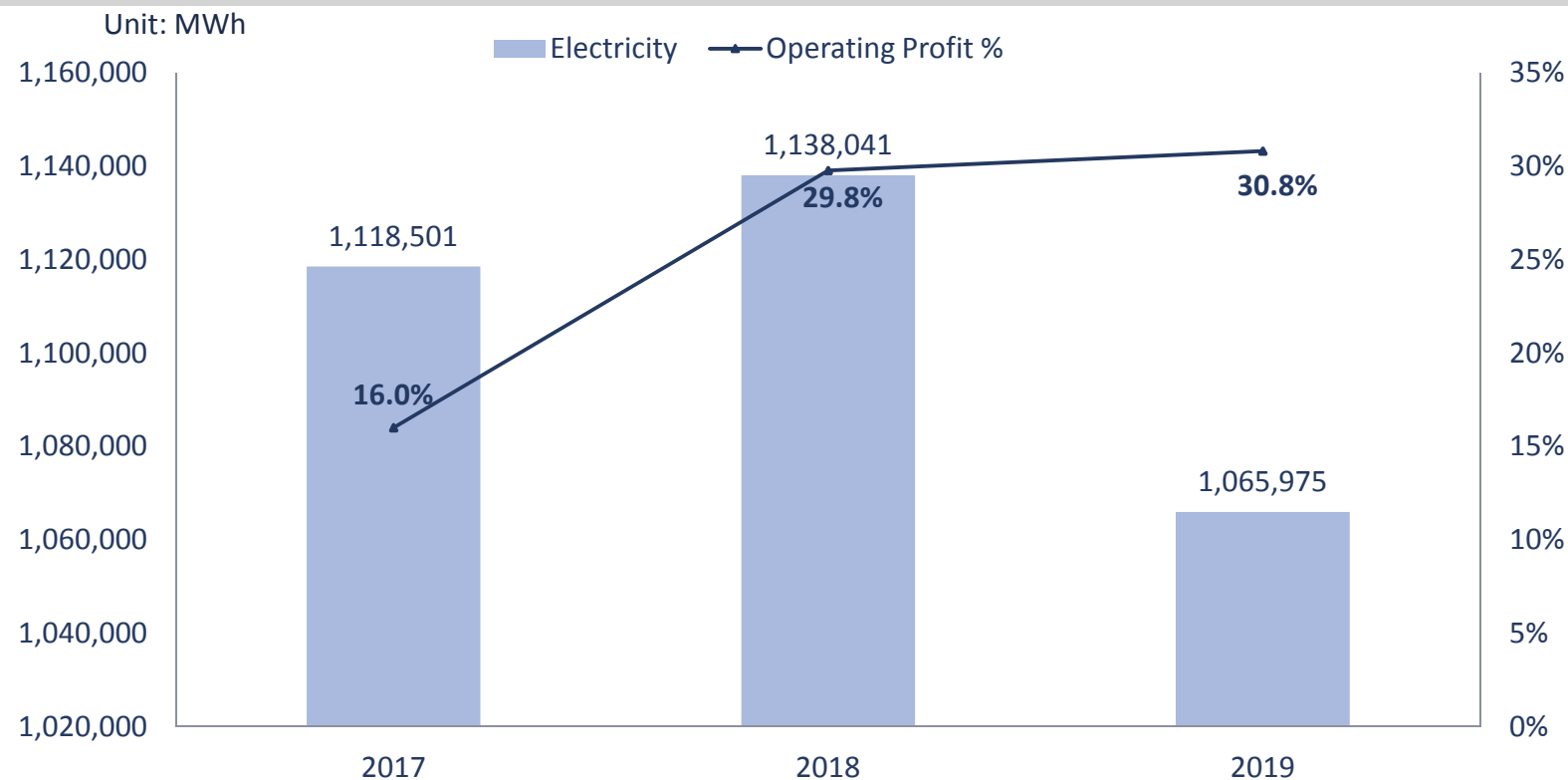




Sustainable Environment - Electricity

- By introducing energy saving measures, GlobalWafers lowers power consumption successfully without impeding it from enlarging production ability, we have achieved 1% power saving compared to last year as of now.
- Optimizing electricity consumption group wide has helped us improve operating profit by 14.8% in 3 years.

GWC-Group Electricity Consumption vs. OP%

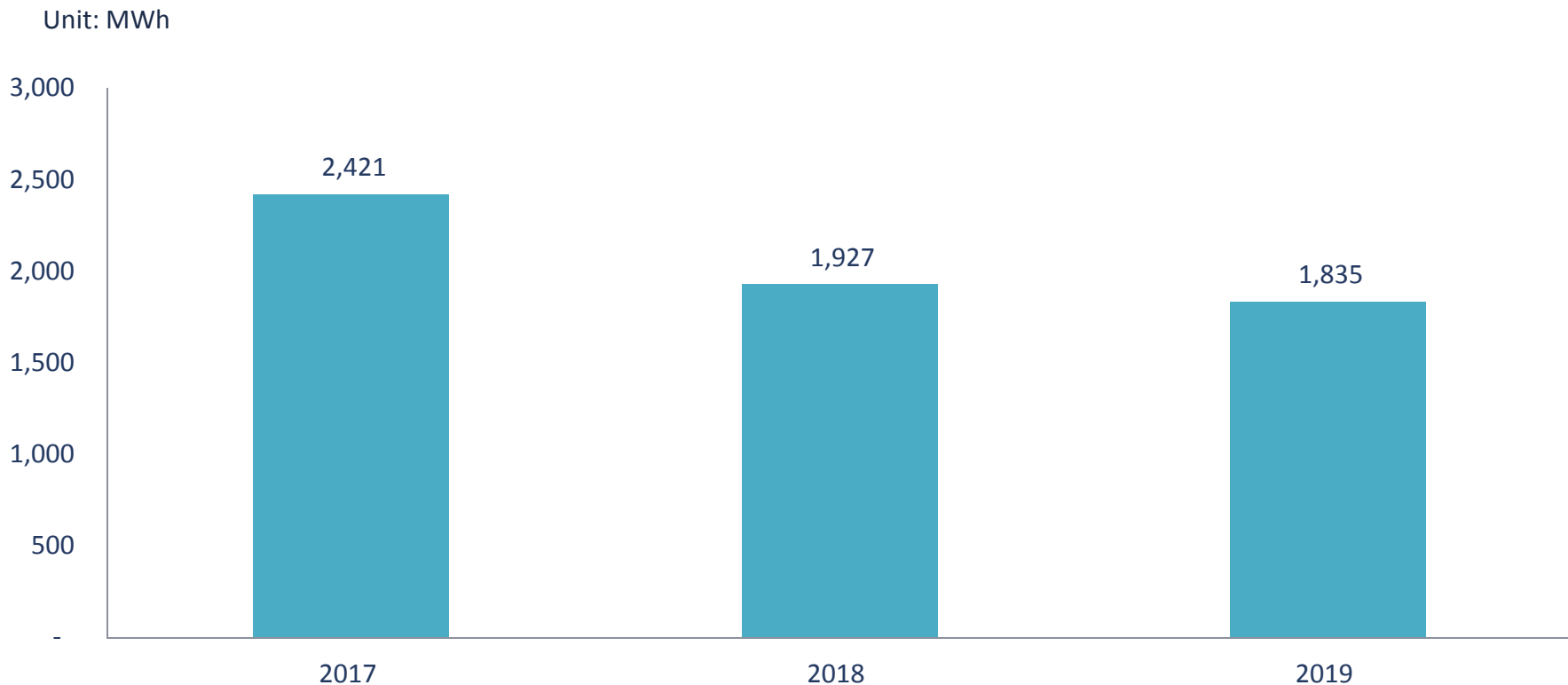




Improvement on Electricity Consumption

- Though ingot growing and wafering consume a great deal of energy, GlobalWafers dedicates in enhancing energy efficiency and achieves same revenue with less energy.

Electricity Needed to Generate NTD100mn Revenue

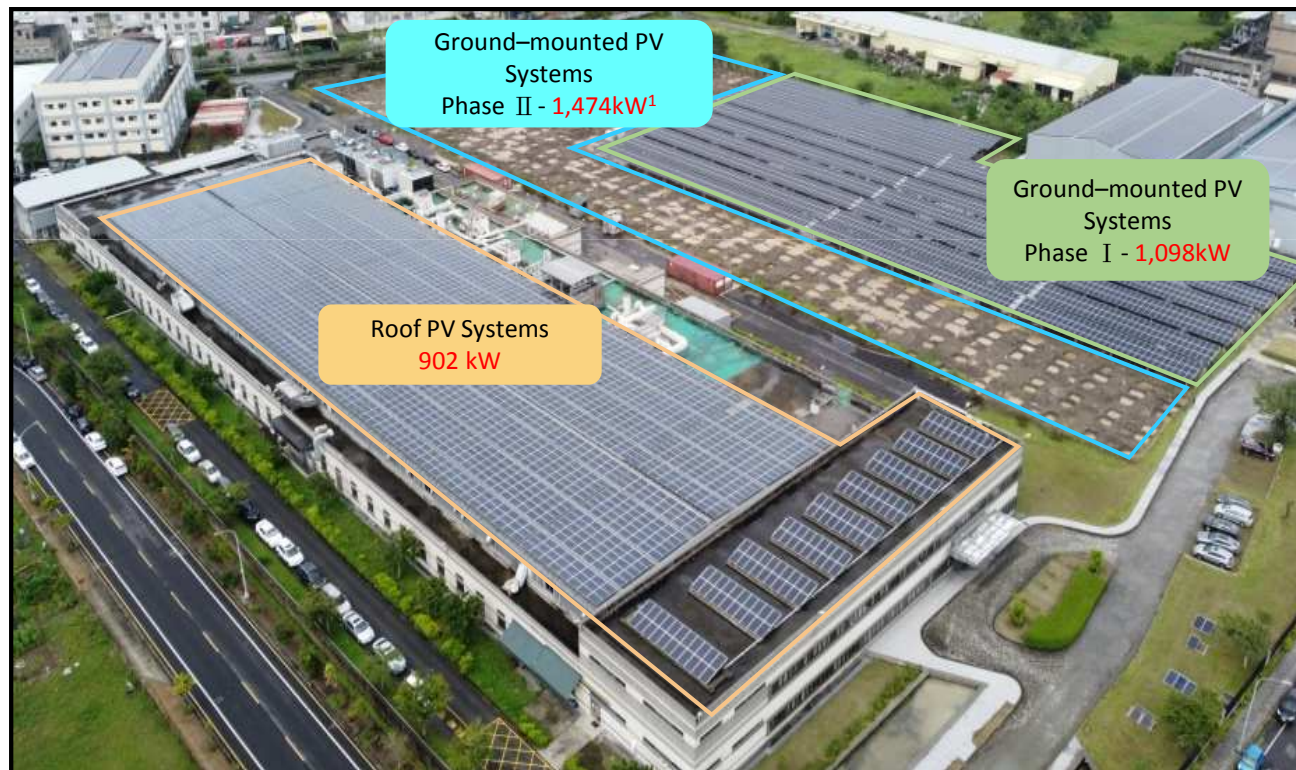




Committed to Green Energy

- To fulfill the commitment to sustainable development, GWC cooperates with its parent company, SAS, on solar installation of 3,474 kW* which could reduce 1,842 tons of CO₂ emission every year.

Solar System Project



Note:

1. Ground-mounted PV Systems Phase II is under construction and expected to be done in Q221.



Sustainable Environment – Waste

- GlobalWafers adopts circular economy solutions to reduce costs and environmental impact.
- Almost 80% of the waste could be reused and regenerated as ingredients by other industries.
- Our relentless efforts make us outshining in the industry and are awarded the High Distinction Award from Year 2020 Outstanding Enterprise for Waste Reduction and Circular Economy.

***2020 Outstanding Enterprise Award
for Waste Reduction and Circular Economy***



High Distinction Award





Charity and Environment Protection

- GlobalWafers devotes our love to the ones that in need via donations. We also extend our care to environment through corporate volunteers by a series of activities like beach cleaning.



**2020 Aug. & Nov.
Beach Cleaning**



**2020 Sep.
Donation to Rural Tribe**



**2020 Oct.
Ambulance Donation to Italian Red Cross (CRI)**



Ethical Business Practice



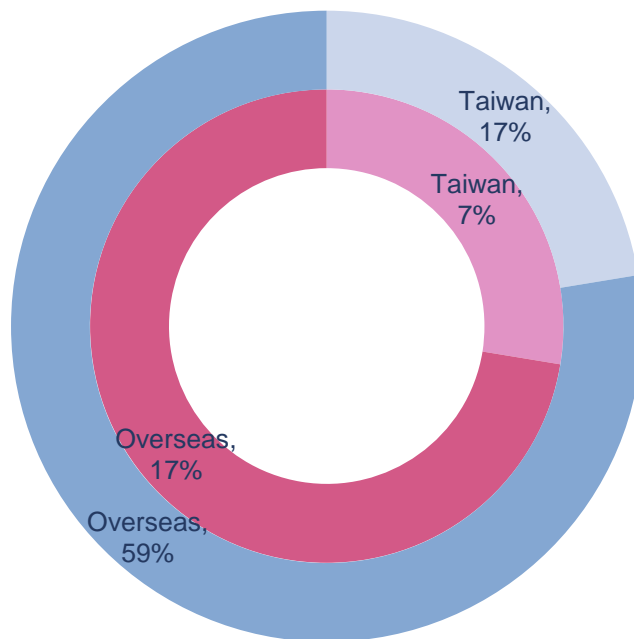


Diversity and Inclusion

- GlobalWafers is committed to supporting gender equality, advancing women in the workplace globally.
- Women in our global workforce is 24% overall, 14% on our board.

Percentage of Women in Our Global Workforce

Male Female



Percentage of Women on Our Board (%)

Female Male

